

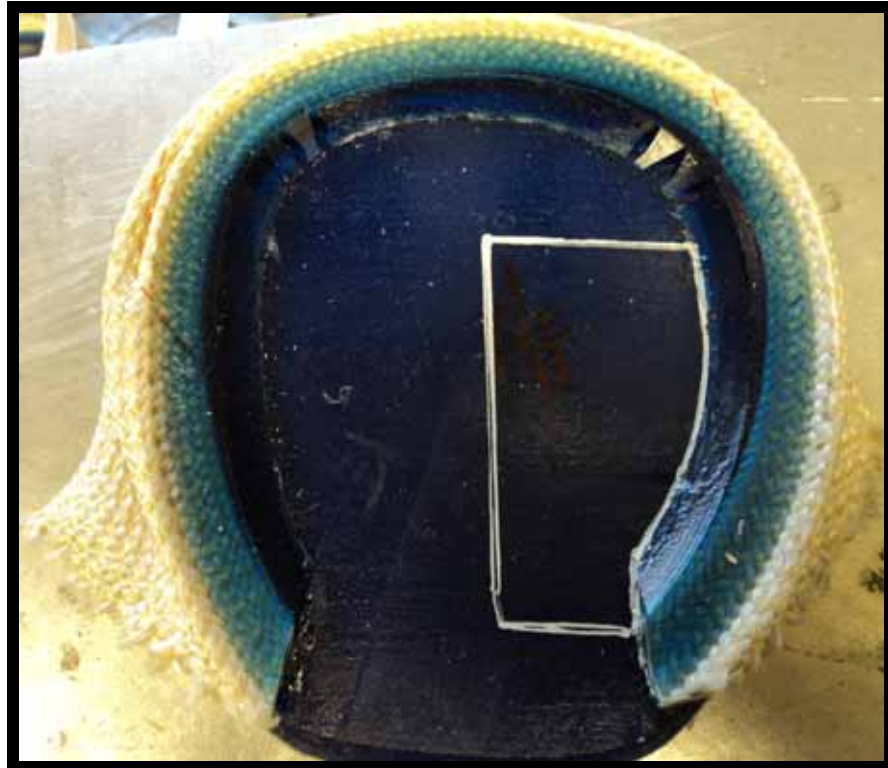
Adding *treatment plates* to the  
Sound Horse “Sigafos” ***Series II***

Jeff Henderson C.J.F.

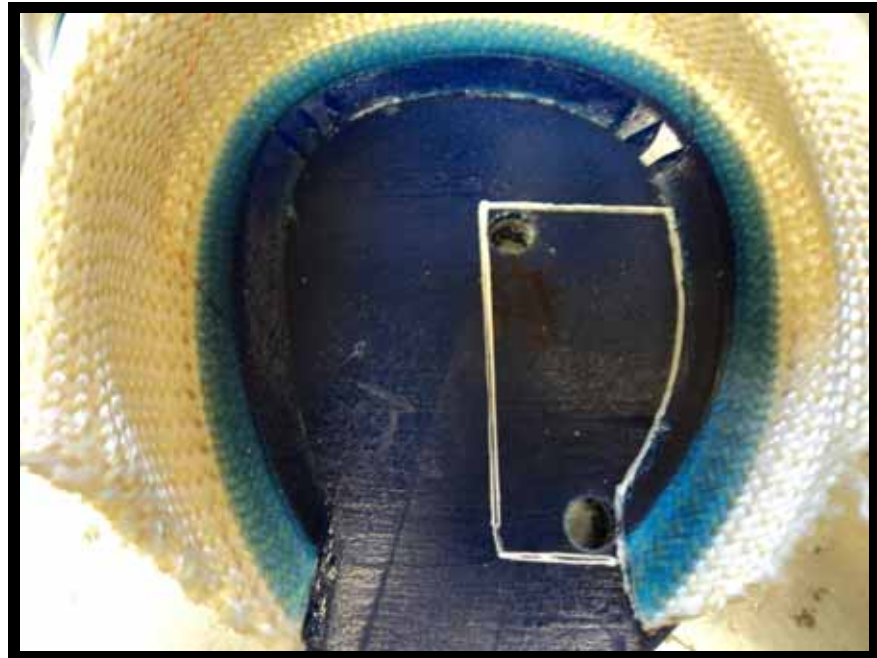
Manuel Cruz

Rood & Riddle – Lexington, KY

- Begin by marking where you want to cut the access hole on the foot surface of the shoe.



Use a large drill bit to make holes to allow access for the jigsaw blade.



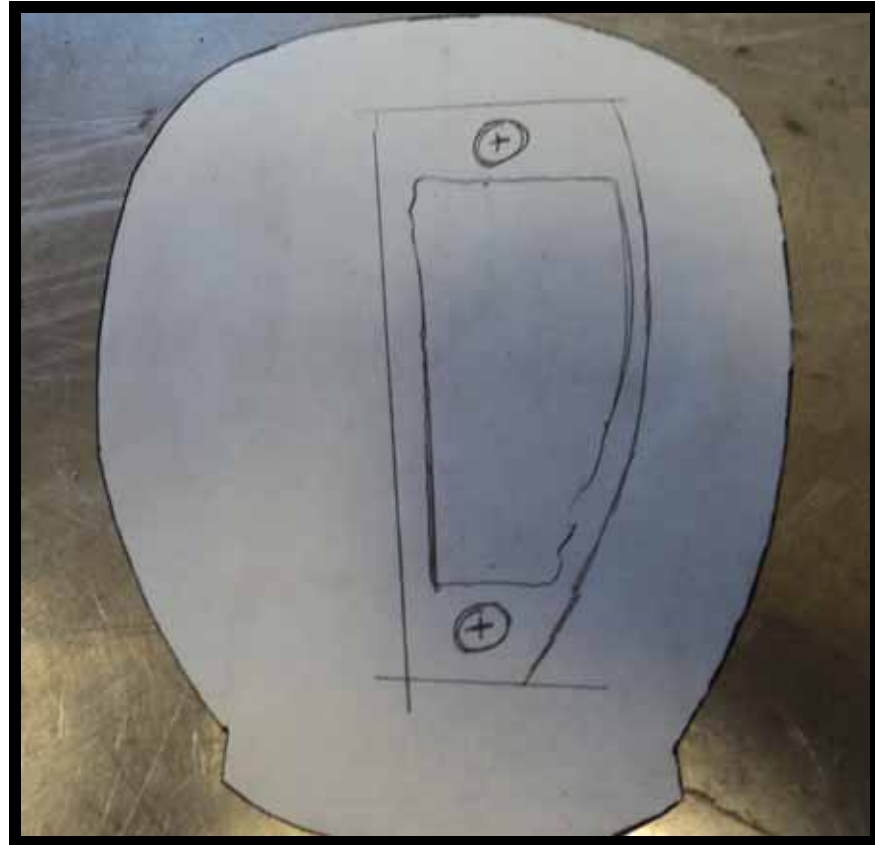
- Cut out the access hole with the jig saw.
- Use a half round file to clean up and shape the hole.



- Mark through the access hole onto tracing paper for a template.



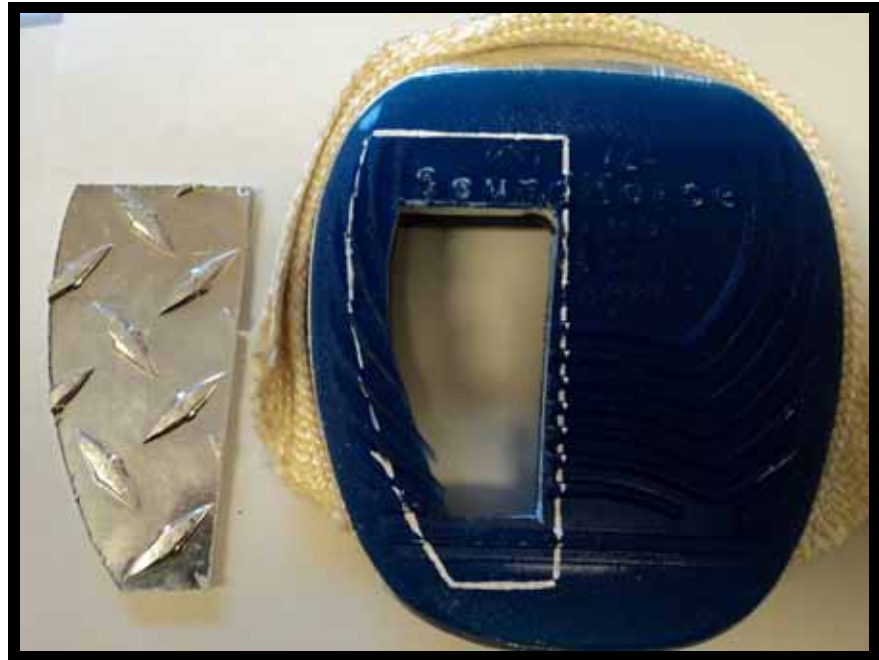
- Use the template to layout how the plate will fit over the hole.
- Allow plenty of room for screw heads.... at least 3/4 inch from the edge of the holes.
- Only about 1/4 inch overlap outside the hole is necessary where there are no holes.



- When using diamond plate aluminum trace around the template the same way that you traced through the hole.
- When the shoe and plate are flipped over the plate and diamonds will be in the right location.



- Mark around the edge of the plate making sure there is plenty of room for the screws and it is centered over the hole.



- Use a box cutter or disposable razor knife to score through the polyurethane bottom down to the aluminum along the line.
- Take your time, it is easy to slip with the knife.



- Use a sharpened chisel or gasket remover to separate the polyurethane from the aluminum to allow the plate to sit down in the shoe.



- Use a file to take any rough edges from the hole.
- Use #5 drill bit to drill holes through the aluminum for the screws.



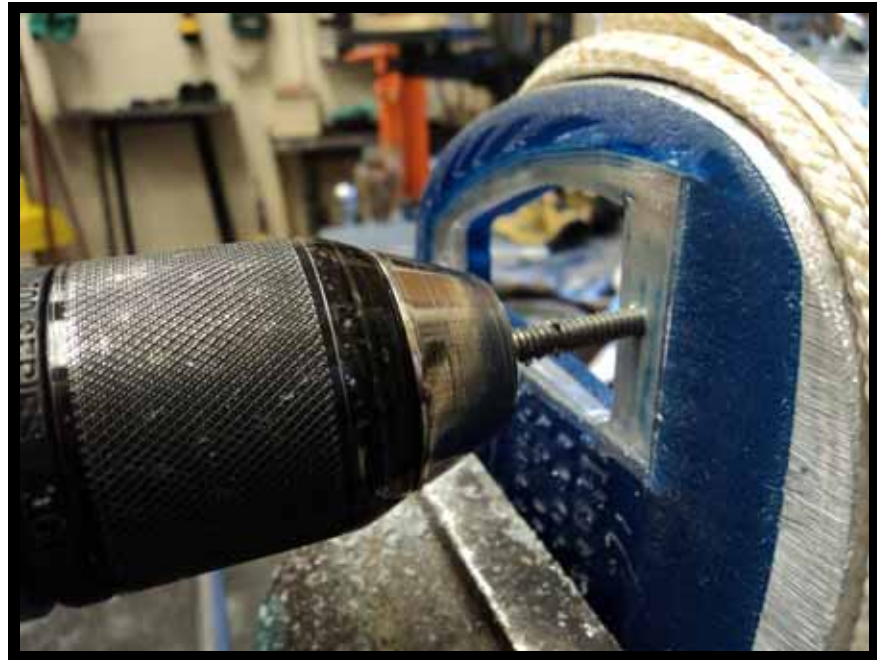
- Fit the plate down into the shoe.
- Drill through the shoe into the plate with #5 drill bit.



- Drill holes in the plate with a 1/4 inch drill bit.
- Countersink holes on the ground surface to allow for the screw heads.



- Tap the holes with a 1/4 inch tap to accept the screws.



- The finished plate fit into the shoe. Ready for the foot.



- The plate can be placed wherever needed on the shoe.

